




The best under the sun.
For the most alluring shade in the world.

Designer Awnings for Patio and Balcony

markilux[®]
The best under the sun



The full details
can be found on [markilux.com](https://www.markilux.com)



The sun smiles down on an awning. Life smiles on you under a markilux.

Outdoor living

Hours of relaxation and recuperation or valuable time well spent with your family and friends – these are the precious moments in which you cherish your outdoor lifestyle. Designer awnings from markilux not only provide shade, they open up new opportunities for enjoying life. They provide protection on hot days and make for a cozy ambience long after the sun has set. In choosing a markilux designer awning, you are opting for the very best quality “Made in Germany” – and for endless hours of light-hearted fun outdoors.

markilux designer awnings have received a multitude of awards:



reddot design award
winner 2017

| Brand

| e.g. markilux MX-2 / MX-L compact

Reduced to the essence: Free. Time.

Premium quality made in Germany.

For over 50 years, markilux has been developing and manufacturing top-quality solar protection solutions. markilux designer awnings are characterized by their first-rate, multi-award-winning design and innovative technology. The production of awning and cover under one roof is the essence of what markilux “Made in Germany” represents, with the aim of making an al fresco lifestyle comfortable, convenient and enjoyable. With markilux, you can turn your favorite spot outdoors into something extra special. **The best under the sun. Create the most alluring shade in the world.**



markilux quality

The best possible materials and a comprehensive quality management system ensure that every markilux designer awning has a long service life. As a company, markilux is certified in accordance with EN ISO 9001 standards.



markilux functionality

markilux combines innovative technologies and smart solutions to create high-end products. A multitude of accessories and operating options make it possible to individualize your markilux designer awning in line with your own personal wishes.





markilux[®]

markilux service

The combination of a brand product, expert advice and professional installation makes your solution perfect. Qualified markilux specialist dealers provide a comprehensive service and a personal point of contact in your area.

Member of  **Rat für Formgebung**
German Design Council



markilux design

It is the perfect combination of form and function that turns an awning into a markilux designer awning. In this respect, markilux relies on its long-standing experience in R&D and design.

Designer awnings from markilux. Individuality right down the line.

Your model from 1 million configuration options

You can make your markilux designer awning as unique as you are. With a choice of more than 40 models, over 200 timeless cover patterns and a wide range of accessories, you can design an awning to suit your every need.

With lighting modules, smart control technology and other additional functions, markilux awnings can enhance your outdoor experience at any time of day – or night.

Your markilux specialist dealer will gladly assist you with professional advice and suggestions when helping you configure your very own designer awning.



Technical overview from page 98

Model

Perfect Design. Perfect function.

Every markilux designer awning combines design, quality and technology into one unique solution. Within our large range of models, there is bound to be one that fulfils your wishes in terms of functionality and matches the ambience of your patio perfectly.

From page 8

+ Awning cover

A large range of colors and patterns

Our textile designers identify current trends in interior design, architecture and color preference, and turn them into unique awning covers. With more than 200 patterns to choose from, markilux offers you an unparalleled selection.

From page 80

+ Specification

Awning color, operation and options

Modern colors, easy-to-use operating technology, optional lighting solutions and additional extras, leave nothing to be desired and make being outdoors a pleasure even when the sun isn't shining.

From page 86

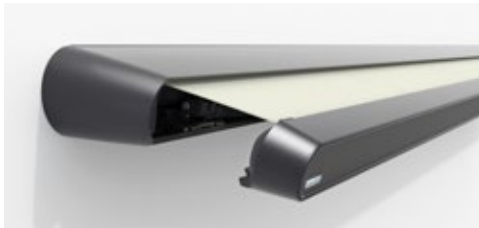


Awning configurator and markilux AR App

Configure your own dream awning with the awning configurator on markilux.com or live on your house with the free [markilux AR App](#).



A perfect outlook. Everything in view.



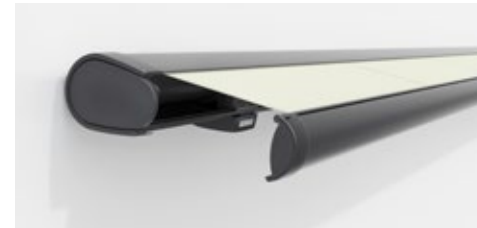
MX_1 compact

page 14



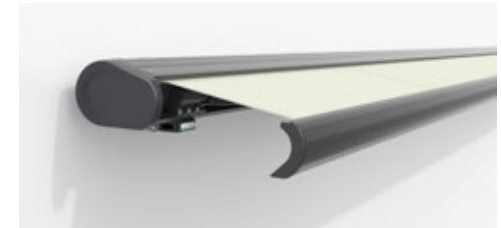
MX_3

page 22



MX_6000

page 34



MX_5010

page 36



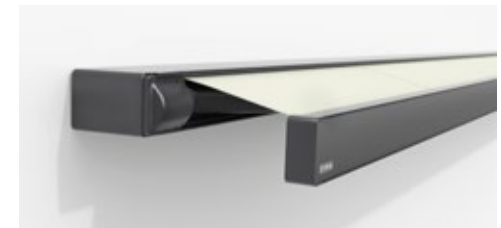
MX_2

page 18



MX_4

page 28



MX_970

page 38

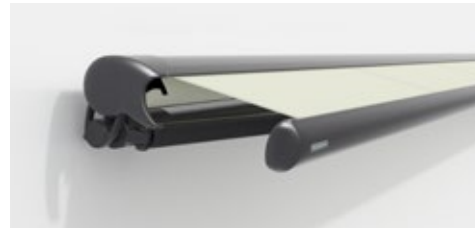
markilux Cassette Awnings

When the awning is retracted, the cassette completely encompasses the awning cover and technology, and thus provides the best possible protection from wind and weather.



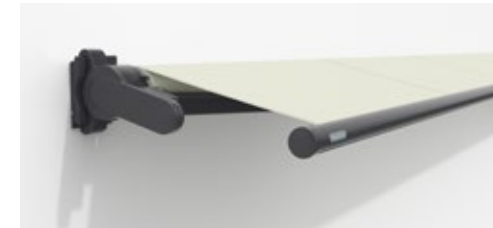
MX_990

page 40



MX_1600

page 46



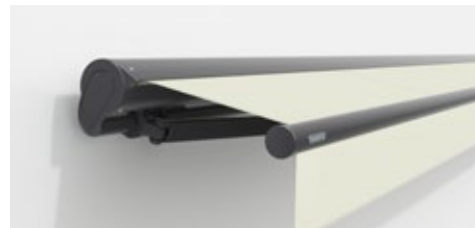
MX_930

page 50



MX_3300

page 42



MX_1710

page 48



MX_1300

page 52

Semi-cassette and Open Style Awnings

Part or all of the cover and technology is not protected.
Perfect, particularly for use on patios and balconies not exposed to the weather.

Fantastic ambience. An overview.



mX_pergola classic

page 56



mX_pergola cubic

page 58



mX_pergola compact

page 60



mX_pergola stretch

page 64

markilux Pergola Awnings

Large-format sun and weather protection resistant to wind.

The cover is extended via lateral guide tracks.



MX _markant

page 68



MX _syncra

page 70



MX _format

page 76



MX _planet

page 72




MX _790

page 78

markilux Awning Systems

Frame systems with awnings to your own exact specifications. Free-standing in the garden or attached to houses which for structural reasons do not permit the installation of an awning.

markilux Wind Protection and Extra Privacy
Lateral protection by markilux against the sun, light wind and prying eyes.



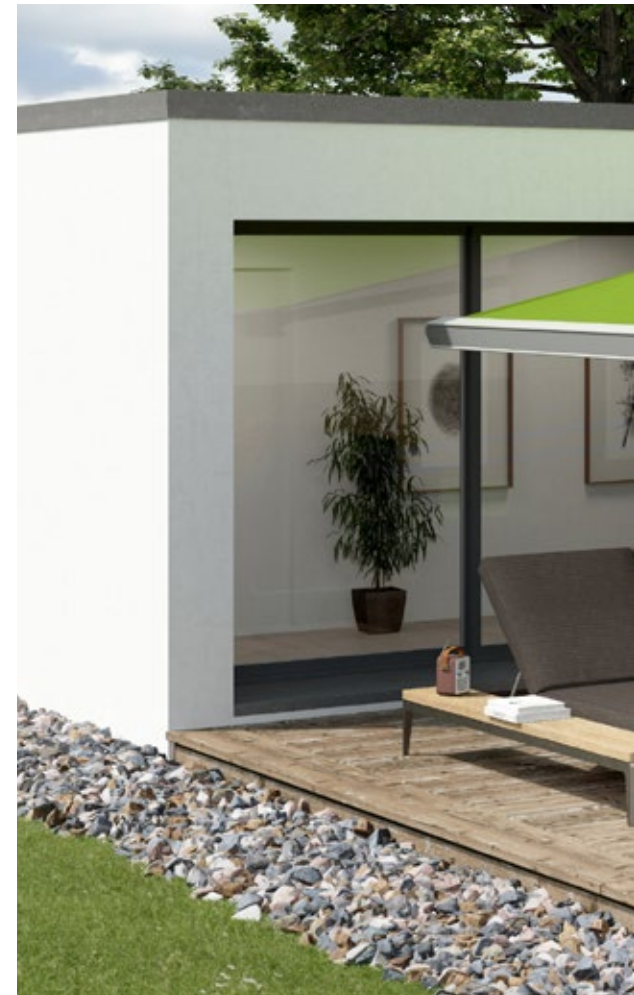
Design is the art
of melding function
with beauty.

Cassette Awnings

Quality has its merits. Usually the very best ones.

markilux MX-1 compact

Just one look and the markilux MX-1 has already made a big impression by virtue of the way it uniquely combines form and function. Retracted, the tapered full cassette with a depth of 38 cm makes a big impression on the observer. Extended, it shows its true proportions: gleaming LED options in the cassette and front profile, eye-catching ambient lighting as well as a multitude of frame color combinations. Design, “made by markilux”, that has received many an accolade. The markilux MX-1 manages to create an inimitable atmosphere at any time of the day or night, that will not cease to raise your heartbeat – now and in the future.



LED Spots in the cassette

During the day, the markilux MX-1 compact dowses everything in beautiful shade – and in the evening bathes everything in light.

mx_1 compact



Cassette awning
max. 700 × 415 cm,
cassette depth approx. 38 cm

Arm technology
Bionic tendon

Options
Shadeplus and
a broad range of light
and color options,
page 16

A personal statement on any façade

The markilux MX-1 compact with a cassette depth of 38 cm is an eye-catcher and sun protection in one.

mx_1 compact Options



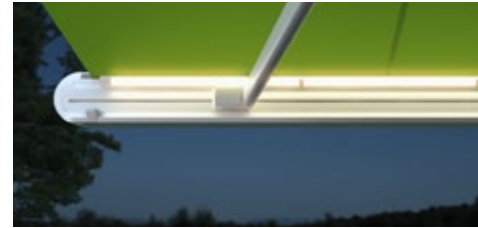
Exclusive Coatings Selection MX

Front styling panel finishes in fashionably modern metallic paint, metal and special effect lacquers, page 26.



Color combinations

The cassette and styling panel are available in different colors which can be mixed and matched freely with one another.



LED Line in the front profile

Gives uniform lighting and a pleasant ambience after sunset.



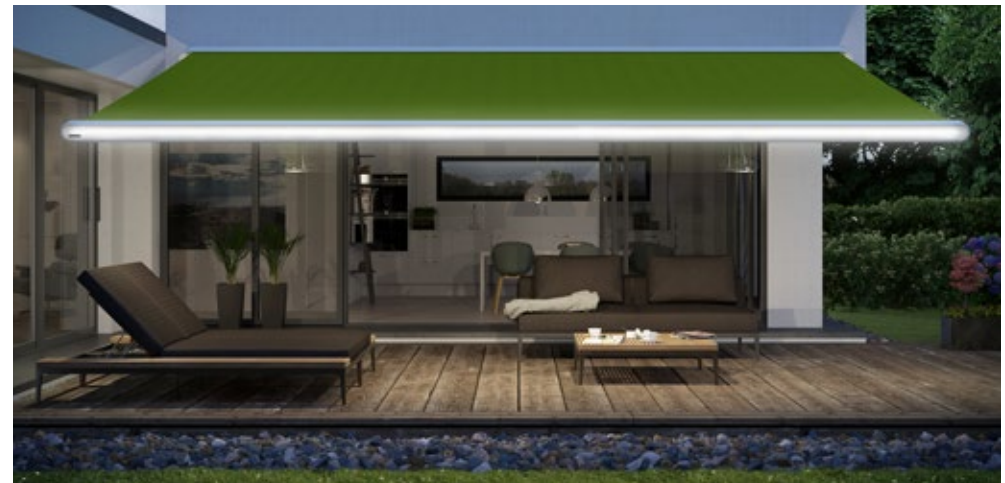
LED Spots in the front profile

The brilliant lighting effect converts the room under the awning into an oasis of well-being in the evening.



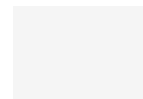
LED Spots in the cassette

Highlight specific areas and enjoy a pleasant evening under the awning.



LED ambient lighting

An impressive eye-catcher in the evening hours. The front profile is available in five contrasting colors and can be illuminated with dimmable lighting.



Traffic white



Light ivory



Yellow



Red



Green



markilux shadeplus

At just the touch of a button, the optional protection from glare and prying eyes creates an enviable, private room outdoors. As standard, the shadeplus is equipped with a radio-controlled motor and is supplied with a markilux remote control.



Plain and simple. Envable.

When closed, the markilux MX-2 gives the impression of being entirely in one piece. With or without LED lighting. Product design – at its best.



Open to the magic of personalisation

When open the markilux MX-2 shows its full potential and wins you over in every respect. Solar protection – state of the art.



Room for personalisation

Every detail has been carefully shaped, anything unnecessary dispensed with. Uncluttered and restrained – and all the more elegant as a result.

mx_2



Fascinating in shape. Functionally superb.

markilux MX-2

This is the essence of flowing design and perfect solar protection technology and it can be married seamlessly to architectural requirements and patio design. The reduced, organic and harmonious design language seems to have come “from a single mould” and fascinates in every form – and function.



Cassette awning

max. 600 × 300 cm
max. 500 × 350 cm

Arm technology

Bionic tendon

Options

LED Line in the cassette,
LED Spots under the cassette,
various standard color
combinations

markilux MX-2 color

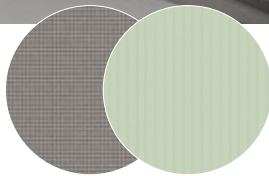
Brilliantly coordinated and perfectly “covered”: ten fashionably modern color combinations mean individuality and personality, complementing the architecture of the building, have to be seen and experienced.





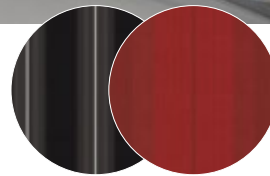
01

Top profile: Traffic white RAL 9016
Frame color: Stone grey metallic 5215
Cover recommendation: 36965 | 31411



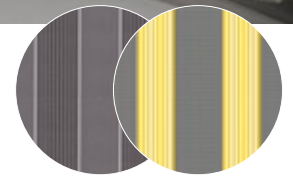
02

Top profile: Anthracite metallic 5204
Frame color: Metallic aluminum RAL 9006
Cover recommendation: 36924 | 31204



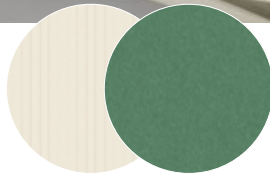
03

Top profile: Anthracite metallic 5204
Frame color: Stone grey metallic 5215
Cover recommendation: 31467 | 36981



06

Top profile: Havana brown textured finish 5229
Frame color: Off-white textured finish 5233
Cover recommendation: 31409 | 41161



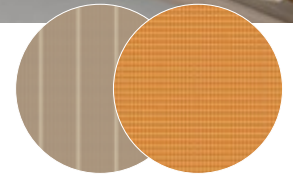
07

Top profile: New champagne metallic 5062
Frame color: Anthracite metallic 5204
Cover recommendation: 30207 | 36918



08

Top profile: Off-white textured finish 5233
Frame color: New champagne metallic 5062
Cover recommendation: 36907 | 36967

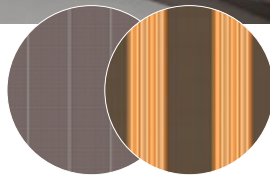


mx_2 Options

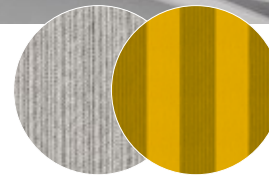
© RAL Bonn 2023



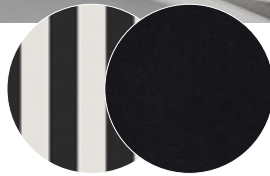
Top profile: Off-white textured finish 5233
Frame color: Havana brown textured finish 5229
Cover recommendation: 31404 | 31472



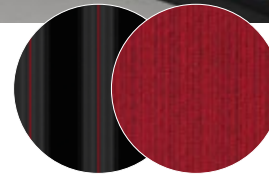
Top profile: Anthracite metallic 5204
Frame color: Traffic white RAL 9016
Cover recommendation: 30709 | 31401



Top profile: Concept black 5095*
Frame color: Traffic white RAL 9016
Cover recommendation: 41680 | 31028



Top profile: Crimson 3002
Frame color: Concept black 5095*
Cover recommendation: 36923 | 30703



Tuned for
 color
 from top profile
 to cover.

markilux MX-2 color

Your very own markilux MX-2 can be configured from a total of ten color combinations by matching the top cassette profiles and frame colors.

You can choose a suitable color for the cover from two recommendations or – entirely at will, according to your style and taste – from the entire markilux awning fabric collection: collection one.

* RAL 9005 matt

Cassette awning
max. 600 × 300 cm
max. 500 × 350 cm

Arm technology
Bionic tendon

Options
LED Line in the cassette,
LED Spots under the cassette,
various standard color
combinations,
colored styling panels
and end cap insert,
from page 24



GERMAN
DESIGN
AWARD
WINNER
2020



MX_3



The awning with both elegant curves and clean lines.

markilux MX-3

Shapely curves, clean lines, a fascinating color spectrum – these are the defining features of the markilux MX-3. The color choice of the all-round styling panel offers a unique customization option and makes the hearts of patio and balcony owners beat faster. When closed, the awning makes a good impression with its harmonious appearance and when open, it fully reveals its technical superiority.



Clean lines. All round.

If you like shapely curves in combination with a straightforward design, you will love the markilux MX-3.

The best spot under the sun – even in the evening

As individual as your life – as unique as you like it. Discover all your options at your local markilux specialist dealer and on [markilux.com](https://www.markilux.com)

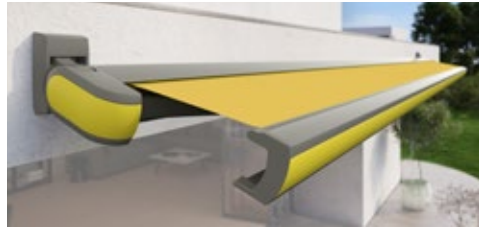
LED lighting options



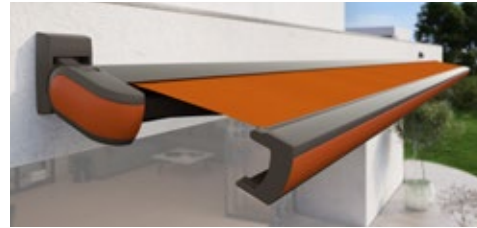
Perfection. All round.

Whether you choose diffuse LED Line or accentuated LED Spot lighting, you will find all the highlights in the showroom of your local markilux specialist dealer and on [markilux.com](https://www.markilux.com)

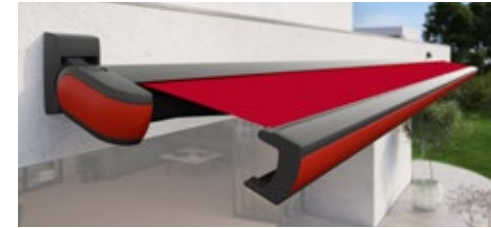
special architecture edition



Sulphur yellow RAL 1016 | 5215 | 30901*

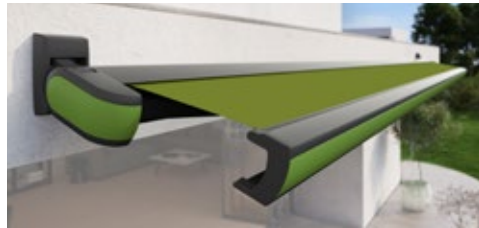


Red orange RAL 2001 | 5229 | 30912*

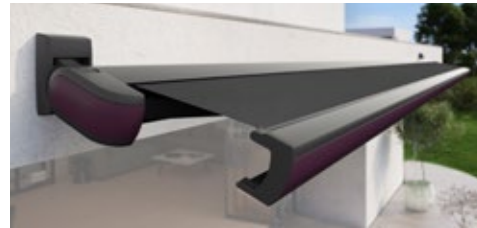


Traffic red RAL 3020 | 5204 | 41130*

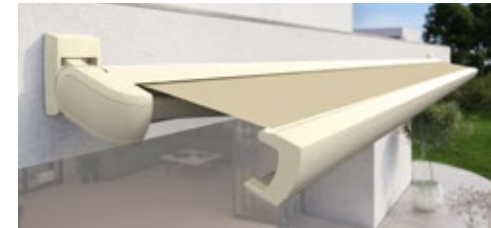
© RAL Bonn 2023



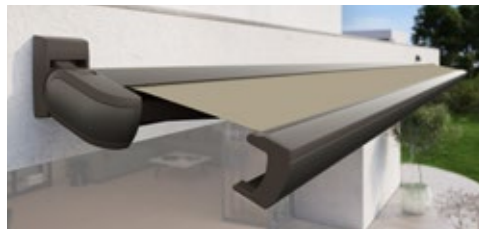
Yellow green RAL 6018 | 5204 | 31486*



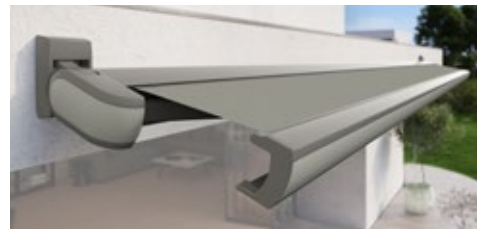
Purple violet RAL 4007 | 5204 | 31597*



Pearl white RAL 1013 | 5233 | 30937*



Pearl mouse grey RAL 7048 | 5229 | 31487*



Agate grey RAL 7038 | 5215 | 31592*

Color and satisfaction unlimited

The markilux awning colors and eight additional accentuated colors for the all-round styling panel can be combined at will without a surcharge and are available with a color-coordinated awning cover recommendation on request. For even more individuality, select an exclusive coating from our Selection MX.

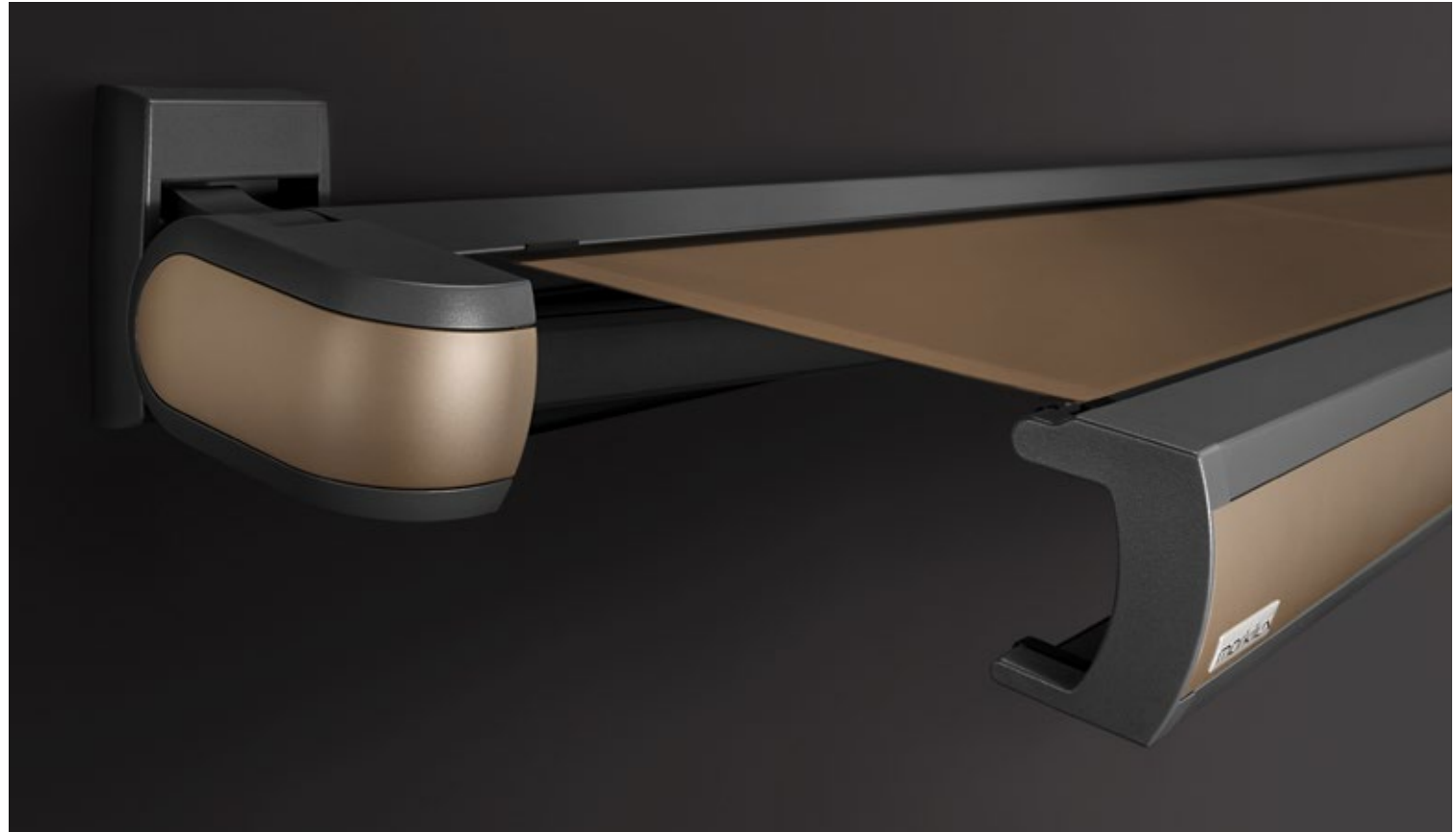


* Front panel | Frame color | Cover pattern

Exclusive Coatings Selection MX



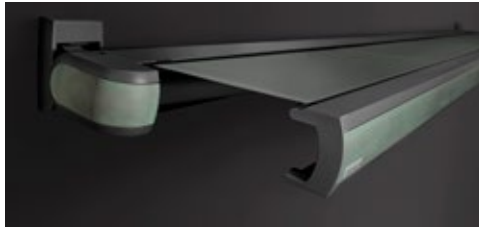
- + Innovative coatings with fashionably modern metallic finishes, metal and special effect lacquers
- + 10 elegant color combinations (feel free to select other combinations)
- + High degree of individualization
- + Can be specified for the awning models markilux MX-3 and MX-1 compact



The new top coat in awning finishes

A perfect look in a unique color combination and with innovative surface coating. Ideally suited to outstanding architecture or contemporary patio and garden design. When the special turns into something very personal: Selection MX – the new, multi-award-winning top coat for awnings.

mx_3 | mx_1 compact Options



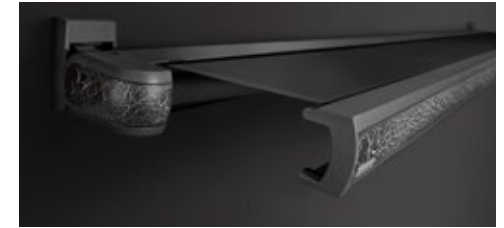
SMX-01 Copper with green patina | 5204 | 31058*



SMX-02 Brass with dark patina | 5233 | 30907*



SMX-03 Bronze with dark patina | 5229 | 31387*



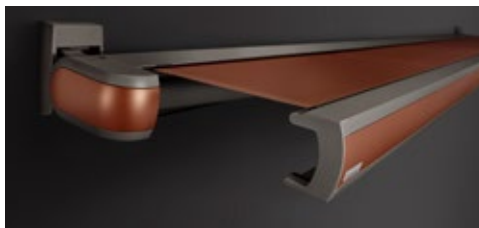
SMX-04 Matt black/silver special effect lacquer | 5204 | 31028*



SMX-05 Matt white/silver special effect lacquer | 5233 | 31009*



SMX-06 Silver-grey special effect lacquer | 5215 | 31018*



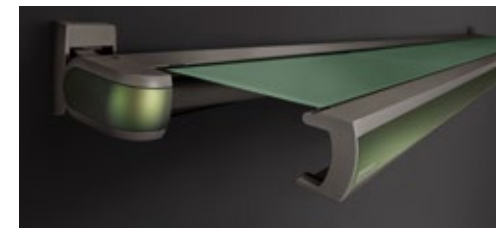
SMX-07 Amber orange metallic matt | 5229 | 31483*



SMX-08 Pebble beige metallic matt | 5233 | 31487*



SMX-09 Ruby red metallic matt | 5204 | 42130*



SMX-10 Emerald green metallic matt | 5229 | 41161*

* Front panel | Frame color | Cover pattern

Cassette awning

max. 700 × 350 cm

max. 600 × 400 cm

Arm technology

Bionic tendon

Options

LED Line in the cassette,
LED Spots in the side caps,
LED Spots in the front profile*,
external light sources,
colored lighting,
various standard color
combinations

* Available from May 2023



The interplay of attractive awning design and sophisticated LED technology

Designed to provide shade for large areas during the day and magical moments in the evening.

The markilux MX-4 fulfils the desire for sophisticated outdoor living at any time of day.

MX_4

Captivating composition with an excellent ensemble.

markilux MX-4

Make way for the cassette awning the markilux MX-4. Designed to shade large areas, its avant-garde design and all-round styling panel are compelling. Product design – both functional and attractive. With the innovative lighting options and the additional wall lights, it shines brightly in the evening and creates spectacular and enchanting lighting effects. Raise the curtain on great composition.



Clear form. Soft curves.

For contemporary architecture – and people who place a high demand on design, functionality and durability.



Individual options

Cassette and front panel colors can be combined freely in the standard markilux colors and emphasise individuality, taste and style.





LED Line in the cassette

Accentuates the design of the awning and creates a fascinating atmosphere.



LED Spots in the front profile*

Showcase designated areas selectively and charmingly.



The later the evening, the more beautiful the light.

Innovative LED lighting technology (WW or RGBWW) extends both the outdoor living space and the amount of time you can spend outside.

* Available from May 2023

mx_4 Options

Always putting al fresco living in the right light

A further highlight – in the truest sense of the word – are the markilux MX-4 wall lights. Matched to the design language of the awning, they fit perfectly into the design image and demonstrate Al Fresco Living like no other.

The markilux MX-4 designer awning in combination with the new markilux MX-4 wall lights and other lighting options illuminate every outdoor area. Completely individualize your experience, with the colors of your choice. The perfect way to create sensational lighting scenarios depending on occasion and mood.



Magical trio. Light. Form. Function.

markilux MX-4 wall lights enrich outdoor living with a uniform overall appearance during the day and lighting full of atmosphere in the evening. Illuminates the area above, below or in both directions.



markilux MX-4 wall lights

In good shape – and perfectly coordinated with the awning design.



Cool and clear – and, with an app, all the colors in the world.



Bright and colorful for a memorable party with friends.



Magical worlds full of atmosphere
Outdoor living in a new light. And color.
Explore your options now at
[markilux.com](https://www.markilux.com)

mx_4 Options



Warm and relaxing for those cozy evenings for two.

Gives light and more

markilux designer awnings that create a glowing atmosphere. Things are becoming more spectacular and versatile with the markilux MX-4. The awning makes it possible to create a very individual lighting atmosphere, depending on the occasion and mood.

All colors are easily and infinitely adjustable – for example by using either the Philips Hue or Somfy TaHoma apps – and allow the outdoor area to be shown in many different “lights” – sometimes in a cool, sometimes a colorful or a very warm lighting mood.

Whatever the color: Additional lighting will not only set the tone but create the stage.

Cassette awning
max. 700 × 400 cm

Arm technology
Bionic tendon

Options
LED Spots in the front profile,
end cap insert
in stainless steel mesh,
frame in polished chrome,
shadeplus,
valance,
coupled awning



DESIGN AWARD
2007
NOMINEE

reddot design award
winner 2006

LED Spots in the front profile

More than a decorative highlight. The markilux 6000 lights up your favorite spot in an elegant, flexible and energy-efficient manner, just the way you want it.

MX_6000



markilux shadeplus

The vertical shading in the front profile adds the finishing touch and provides personal protection from the sun and prying eyes. On request with a switch-operated / remote-controlled motor.



Variable decorative elements

Whether you choose the end cap insert in stainless steel mesh, the end cap trim and frame in a chrome finish or all deliberately uniform in the awning color of your choice – you can design your very own personalised top model by markilux.

No false modesty: Germany's top model.

markilux 6000

A designer awning with many faces – each one more beautiful than the next. Create your own personal and unique model from a wide range of awning frame colors, decorative features and available accessories. With its remarkable dimensions and technical specification, the markilux 6000 makes a lasting impression. It also cuts a dashing figure as well. Invite Germany's top model into your home.

Cassette awning
max. 700 × 400 cm

Arm technology
Twin steel-link chain,
optional: bionic tendon

Options
Polished chrome fittings,
shadeplus,
valance,
coupled awning



MX_5010

At home in every family. At home on your patio.

markilux 5010

The markilux 5010 can be effortlessly extended, either at the touch of a button or via smart control by way of an app, and will be a hit with all the family. On top of that, as a coupled unit with up to three awnings installed next to one another, friends and guests will also be able to find a cozy spot in the generous shade this awning offers. This all-rounder encourages relaxed get-togethers and turns any hour spent outdoors into a happy one.



Polished chrome fittings

Optionally available as an eye-catcher: the chrome-plated end caps fitted to the front profile. On request, with a wall sealing profile which drains rain away over the front of the awning.



markilux shadeplus

Enjoy relaxing on the patio even when the sun is low in the sky.

For everyone who loves all-round beauty.

markilux 970

The markilux 970 exudes the urban lifestyle with confidence. Its neat and slim appearance makes it the ideal model for those who love the simplicity of elegance. Lighting, numerous styling options and the varying front panel finishes lend that individual something to the markilux 970. All in all – simply because of its clean lines and straightforward design – this awning is an all-round performer.



Variety in design

The colors of the cassette and front styling panel can be mixed and matched at will. And there are even three more anodised, accentuated colors available for the front styling panel: silver, bronze and black.



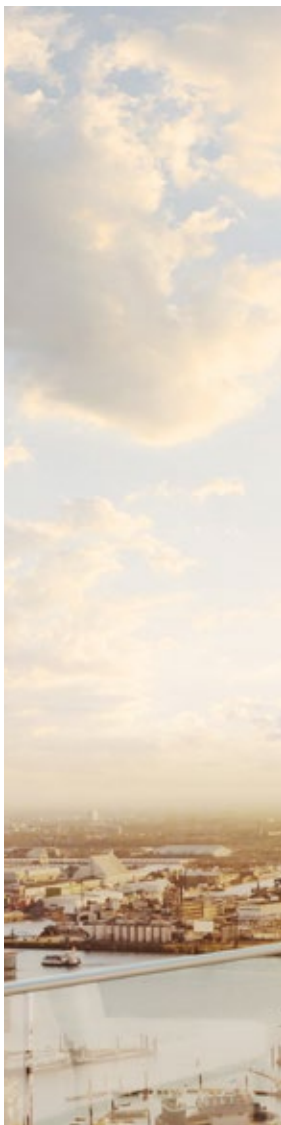
markilux shadeplus

For more protection from prying eyes and the glare of the sun, the optional vertical blind in the front profile is bound to impress.



LED lighting

LED Spots attached to or LED Line in the cassette make for a stylish ambience at dusk and throughout the evening.



mx_970



Cassette awning

max. 600 × 300 cm

max. 500 × 350 cm

Arm technology

Bionic tendon

Options

LED Line in the cassette,

LED Spots under the cassette,

various standard color combinations,

colored front panels,

shadeplus



Creates a carefree ambience.

markilux 990

Small, but impressive! You will be surprised how much technological sophistication there is to be found in this 125 mm high cassette. The folding arms and awning cover disappear into the compactly constructed cassette with U-shaped front profile. An impressive angle of pitch of up to 70 degrees when top fixing makes this awning suit smaller patios and balconies particularly well. Thanks to these advantages you can enjoy many hours relaxing in the most beautiful shade.



End cap insert in polished chrome

That certain something for your markilux 990.



Wall sealing profile

The slim aluminum profile in the same color as the awning closes the gap between the awning and the wall, allowing rain to be discreetly drained off via the awning.



mx_990



Cassette awning
max. 500 × 300 cm

Arm technology
Twin steel-link chain,
optional: bionic tendon

Options
End cap insert in polished chrome,
valance

Cassette awning
max. 700 × 400 cm

Arm technology
Bionic tendon

Options
Valance,
coupled awning





mx_3300



Angular design

The markilux 3300 blends in perfectly with its architectural surroundings thanks to precise niche installation on the ceiling or wall.

High impact.
Low maintenance.

markilux 3300

If you are convinced that an awning cannot be visually merged into its architectural surroundings, the markilux 3300 will prove you wrong. Depending on the structural situation, this designer awning, with its smooth front profile, can disappear completely into a wall or precisely into a recess. When extended, it comes into its own with dimensions of up to 700 × 400 cm. And you can shade even larger areas by coupling up to three single awnings together. Discover how practical the markilux 3300 can be, and make this awning a big hit in your home.

Good technology
is about putting effort
into saving effort.





Semi-cassette and Open Style Awnings

One of the most beautiful. Far and wide.

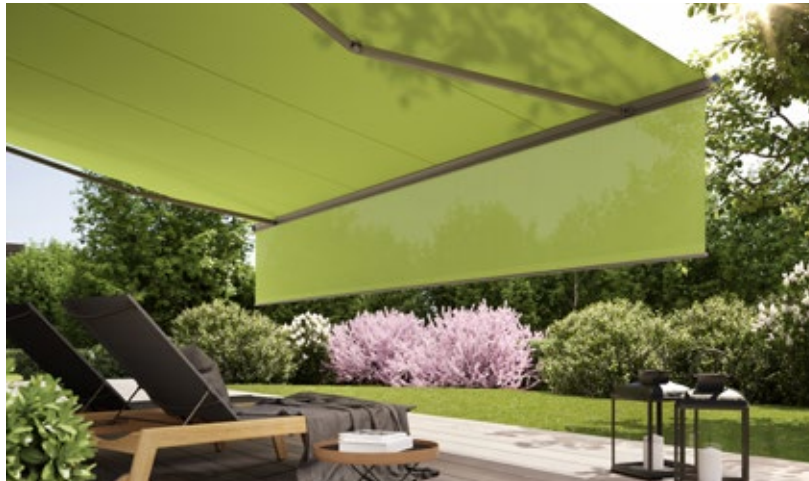
markilux 1600

This awning won the IF product design award for its harmonious, semi-circular design. And it looks unique when it's fully extended, too. As a semi-cassette awning, the markilux 1600 is open underneath. The top cover profile adapts itself to the angle of pitch of the awning and closes completely flush with the front profile when retracted, which protects the cover safely from rain. Take a look around your neighbourhood: your awning is probably the most beautiful far and wide.



Polished chrome fittings

Underline the visual impact of your markilux 1600 in spectacular fashion – fitted to the front profile and torque bar.



markilux shadeplus

The additional blind cover in the front profile of the markilux 1600 makes it possible to shut out low-lying sun and prying eyes.



mx_1600



Semi-cassette awning
max. 710 × 400 cm

Arm technology
Twin steel-link chain,
optional: bionic tendon

Options
LED Line in the folding arms,
end caps in polished chrome,
shadeplus,
valance,
coupled awning,
stretch



Lighting options

The LED Line in the folding arms guarantees evenings with plenty of atmosphere.



markilux 1710 stretch

Gives an impressive performance on narrow patios, balconies and in recesses: thanks to the two crossover arms even awnings with a narrow width are able to extend considerably further.



Polished chrome fittings

Side caps matching the awning color or deliberately emphasised in a finely polished chrome finish. This awning can simply wear anything.



More cover without a cover cassette

Optionally available without a cover cassette, the model variant markilux 1700 can be extended up to 400 cm to provide even more shade.

mx_1710

Great performance. Beautiful details.

markilux 1710

The markilux 1710 interprets the classic awning shape in a contemporary manner. The conspicuously round torque bar merges organically with the round cassette to form an elegant design feature. Because of its shape, the optional LED lighting in the folding arms and the timelessly elegant decorative features in polished chrome, the markilux 1710 will stand out on any patio thanks to its presence and well-designed details.



Cover cassette awning
max. 700 × 350 cm (mx 1710)

Open style awning
max. 700 × 400 cm (mx 1700)

Arm technology
Bionic tendon

Options
LED Lines in the folding arms,
polished chrome fittings,
coupled awning,
stretch

LED Lines in the folding arms

Turn night into day. And make your al fresco lifestyle more comfortable and pleasant.



German
Design Award
NOMINEE 2014



reddot design award
winner 2012

Open style awning
max. 500 × 300 cm

Arm technology
Twin steel-link chains



reddot design award
honourable mention 2009



Valance

This additional decorative finish to the front profile lends this open style awning individual charm.

mx_930

Angling for perfection. Moving. Differently.

markilux 930

This awning moves differently from the rest. When extended, the angle of pitch can be set at up to 80 degrees – so if required, the awning can pivot almost to the vertical. Because as you retract the markilux 930, the awning pivots into a horizontal position and disappears below the soffit. The mobile markilux 930 is perfect for all balconies and eaves that require no additional protection of the awning cover or technology. Your new shading device bows to the sun – allowing you to enjoy being outside in the evening even when the sun is low in the sky.



Pivoting mechanism

The just 122 mm high awning frame disappears discreetly under the soffit when retracted. Only when it starts to extend does the markilux 930 pivot into its preset pitch.



Aluminum coverboard

Protects the cover from dirt and moisture.



Pitch adjustment gear

Changes the awning pitch from 4° to 85° using a crank handle.



Valance

This decorative piece of fabric conceals and protects the folding arm technology when the awning is retracted.



Select from one of the two standard frame colors: traffic white RAL 9016 and metallic aluminum RAL 9006 or, at a surcharge, a RAL color of your choice.

mx_1300

Beautiful. Simple.

markilux 1300

Robust, reliable and fulfils all the expectations of a good awning. With the optional pitch adjustment gear, you yourself can determine the angle at which your awning cover protects you and your loved ones from the sun. And, if desired, a shadeplus: the versatile blind attached to the front profile that protects you from the low-lying sun and prying eyes. Beautiful simplicity! And simply beautiful protection against the sun.



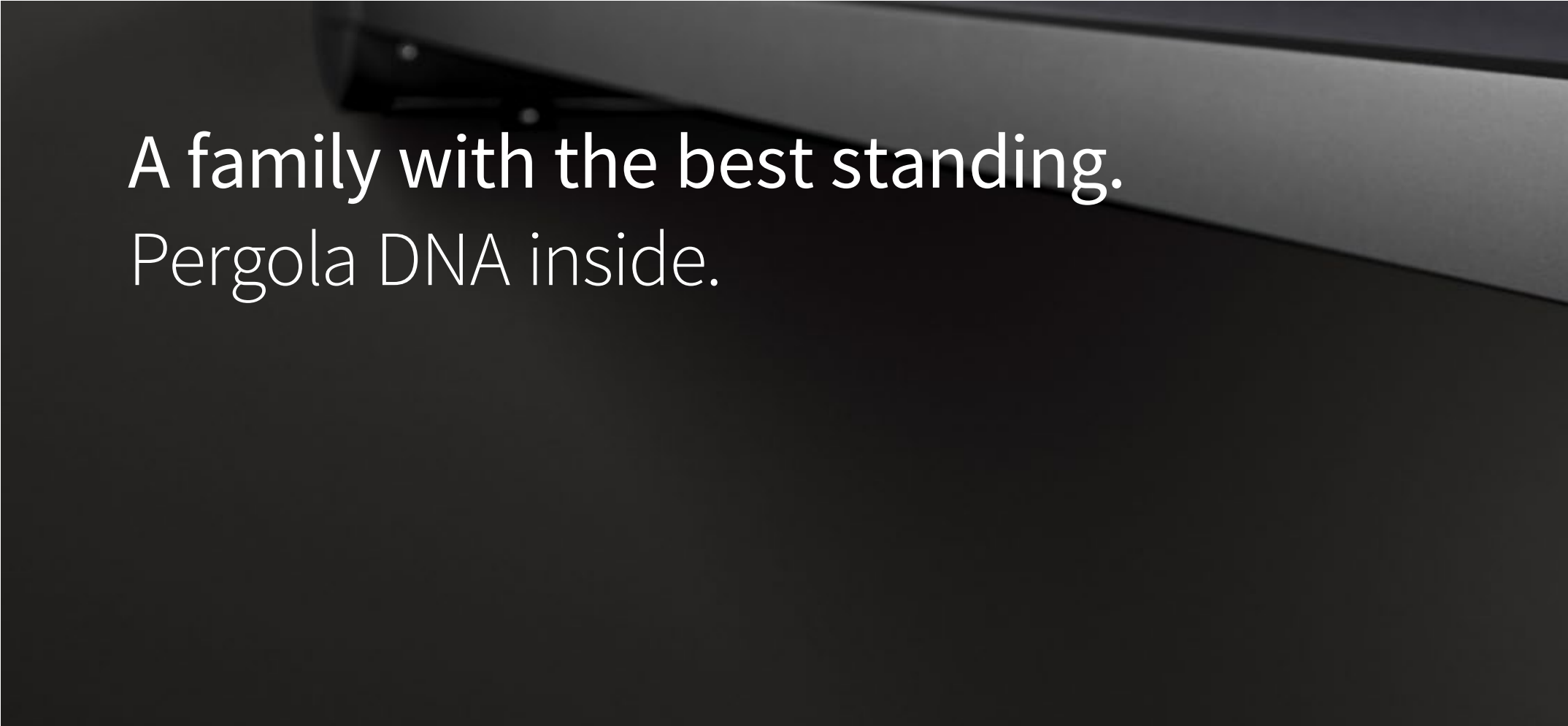
Open style awning
max. 700 × 400 cm

Arm technology
Twin steel-link chains

Options
LED Line in the folding arms,
shadeplus,
pitch adjustment gear,
aluminum coverboard,
coupled awning

LED Line in the folding arms and shadeplus

The culmination of a wonderful day: a lovely evening outside on the patio or balcony with friends.



A family with the best standing.
Pergola DNA inside.

markilux®



Pergola Awnings

Pergola awning

max. 600 × 450 cm

max. 500 × 600 cm

Options

Shadeplus,
lateral wind protection and
extra privacy as well as a
broad range of convenience
and design options,
page 62



markilux shadeplus

The additional vertical blind integrated into the front profile simply blocks out low-lying sun and the glances of inquisitive neighbors.

Coupled pergolas

For all those who want even more shade: up to five single pergola units can be joined side by side.

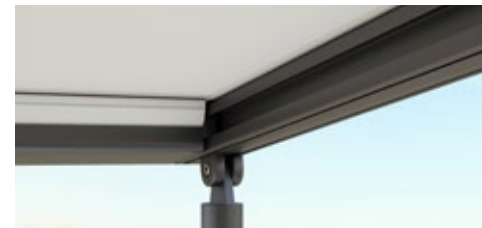
For all those, who have grandiose plans even if it is windy and wet.

markilux pergola classic

When it comes to solar and wet weather protection, the markilux pergola classic ranks top. The awning system on slender posts and with lateral guide tracks provides generous shading with an extension of up to 6 metres. At the same time, the markilux pergola defies wind and weather up to Beaufort 6 (wind resistance class 3). You have every opportunity to make your favorite outdoor place your very own with a markilux shadeplus as well as with a multitude of lighting options and different post shapes. No matter how strong the sun shines or the wind blows, with your markilux pergola classic you can enjoy life outdoors at any time.



Closed full cassette system
The cover disappears completely inside the round cassette, Ø 187 mm, and is ideally protected. The only thing that is more impressive than the look itself is the fact that the technology functions perfectly.



markilux tracfix
One of many markilux refinements: the lateral cover guidance system that leaves no gap between the cover and the guide track. Gives an overall better appearance and improves wind stability.

Pergola awning

max. 600 × 450 cm

max. 500 × 600 cm

Options

Shadeplus,
lateral wind protection and
extra privacy as well as a
broad range of convenience
and design options,
page 62



Wonderful, functional and reliable

Regardless of whatever style you prefer – in the personal combination of awning cover and technology you are bound to find precisely the markilux pergola cubic that fulfils your requirements perfectly.

Essentially square. Practically superb.

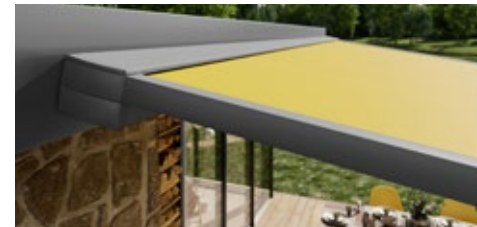
markilux pergola cubic

The design of the new markilux pergola cubic was developed entirely in the spirit of the Dessau Bauhaus philosophy. Functional, clear and timeless contouring on the basis of cubist simplification. In addition to the proven solar protection benefits offered by the pergola, this model integrates itself harmoniously and impressively into today's modern architecture and does not just make a big impression with its high-quality workmanship.



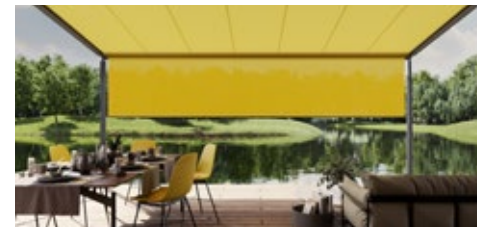
The pinnacle of quality and convenience

Extras for more shade, light and warmth – discover all the ways you can personalise your awning in the showroom of your markilux specialist dealer and on [markilux.com](https://www.markilux.com)



Reduced design language

The angular cassette, 200 × 160 mm, offers room for large-scale solar protection up to 600 × 450 cm or 500 × 600 cm, and as coupled unit a whole lot more.



markilux shadeplus

More shade and protection – even when the sun is low in the sky. Optionally solar driven using the markilux sundrive.



markilux shadeplus

Blocks out glare from the sun and prying eyes in an instant.



An around achievement

The square, compact cassette, 125 x 125 mm, protects the awning cover around.



mx_pergola compact



Dependable. Anywhere. For anyone.

markilux pergola compact

The pergola compact unites the graceful shape of the classic pergola with the latest in product design and the most advanced technology. The compact, space-saving awning system on slender support posts and with lateral guide tracks, which always keep the cover taut, is ideal for smaller patios. The markilux pergola compact invites you to lounge and take it easy. Attractive and functional solar protection. Anywhere. For anyone.



Pergola awning
max. 450 × 400 cm

Options

Shadeplus, lateral wind protection and extra privacy as well as a broad range of convenience and design options, page 62



GERMAN
DESIGN
AWARD
WINNER
2018



reddot design award
winner 2017

Always in the best light

Highlighted with LED Spots attached to the cassette or LED Line in the cassette, on the guide tracks and / or in the light bar guarantee endless hours of pleasure outdoors – even long after the sun has set.



markilux sundrive

An integrated solar module can drive the shadeplus motor in the markilux pergola classic/cubic. When the awning is extended, the front profile and the guide tracks finish perfectly flush with one another.

Telescopic post

For better water drainage, the front post of the markilux pergola can be lowered in a flash between 20 and 40 cm depending on the size. On request operated by motor.

LED Line

Light for reading or informal get-togethers, either in the guide tracks and/or in the lighting bar, turns your night into day. Also available in the cassette with the pergola cubic/compact.



Square posts

As an alternative to round posts, square ones fulfill the desire for clean straight lines.

Ballast boxes

Give your markilux pergola reliable stability when fitting the front posts to foundations is not possible or desired.

Stainless steel crank

Bring the adjustable posts to the desired height in no time at all. Optionally operated by motor.

LED Spots attached to the light bar

The spotlights provide perfect contrast lighting in the evening hours. And they can be pivoted and dimmed, of course! Also available under the cassette in the pergola cubic/compact.



markilux shadeplus

The vertical protection against sun and prying eyes – up to 230 cm in height – creates a private room outdoors with its own special ambience.



Slender appearance

Design reduced to the essence.
The cover safely tucked away.



Well thought through

Water drainage from the cover via the
integral gutter and support posts is assured
from a very low pitch of only 5°.



Attractive protection majestically full of fresh air

A waterproof awning cover leaves you perfectly prepared for a comfortable and relaxed
season – al fresco. Allow your markilux specialist dealer to give you professional advice.

mx_pergola stretch



Many. Fold. Superbly in shape.

markilux pergola stretch

The markilux pergola stretch offers an impressive take on sun and wet weather protection. The cover is perfectly integrated into the minimalistic, high value awning system. The rhythmical, space-saving cover folding technology makes it possible to shade large areas and creates a special and impressive atmosphere. The abundance of optional extras means that the markilux pergola stretch invariably shows itself from its most attractive side.



Pergola awning
max. 700 × 700 cm

Options

LED Line in the cover support profiles,
cross-beam with LED lighting,
vertical cassette roller blinds,
lateral wind protection and privacy screen
as well as many more comfort and design options



Truly imposing with an impressive appearance

Versatile implementation in varying weather conditions. The LED lighting and lateral protection options allow the atmosphere to be adapted as the situation requires.



For every requirement
the right solution.

Using the highest quality
products.

markilux®



Awning Systems

Awning system

maximum post separation up to 600 × 600 cm with two independently functioning awnings, as a 1-field unit up to 300 × 600 cm, overall height 260 cm, other heights are possible

Options

LED lighting, wall fixture, vertical cassette roller blinds, lateral wind protection and extra privacy, panoramic window as well as many more convenience and design options



On request – that little bit more

Whether in combination with atmosphere-creating LED Line or LED Spots: the markilux markant ticks every box in creating a feel-good space in the open air.



Versatile in both form and function

As stand-alone unit or integrated into the existing architecture, the markilux markant is compelling and makes a big impression in any situation. Detailed information can be provided by a markilux specialist dealer near you or otherwise go to [markilux.com](https://www.markilux.com)



Make the rain take a detour.

markilux markant

The free-standing awning system markilux markant is protection against sun, wind and rain, that can be tailored to your precise requirements. The awning, integrated into the frame, lends the system a textile character, its fabrics making it possible to create the pleasant color ambience you have in mind. The markilux markant offers protection, security, freedom, an outstanding appearance and comfort in a purist design.



Your very own personal space in the open air

Using vertical cassette roller blinds, wind protection and privacy screens in combination with the markilux markant, it is possible to create your very own outdoor space.



markilux syncra uno

Two feet. One awning. No problem!

The markilux syncra uno proves itself a stable base even with just one “wing”.



markilux syncra pergola

With the additional posts at the front and the tracfix lateral cover guidance system, this option offers particular advantages in terms of size and wind stability.



Detailed information is available from your markilux specialist dealer

Whether for buildings that cannot have awnings attached for structural reasons, or open-air seating areas – the markilux syncra stands for perfect, large-format solar protection.



Awning system

Depending on the model up to 60 m²,
as a coupled unit even larger areas are possible

Arm technology

Depends on the model

Options

Depending on the model,
uno (only one awning / pergola),
flex (with ballast boxes),
posts round or square,
LED lighting,
foot plate covers,
coupled awnings



markilux syncra flex

The ballast boxes allow installation
without concrete foundations on site.

This will stand
on its own two feet for you.

markilux syncra

Generous shading right where you need it. That is the promise made by the markilux syncra. And one it keeps. As a single unit, it will provide shade for up to 60 m²; as a coupled awning even larger areas are no problem.

This free-standing awning stand system literally stands on its own two feet: two round or square posts and a massive cross-beam ensure reliable stability. Depending on the requirements, one or two folding-arm awnings or markilux pergolas can be attached to it. This awning system is either firmly anchored to the ground (“fix”) or installed using ballast boxes (“flex”).

No matter which variant you choose, you can always count on the markilux syncra.

Awning system

Depends on the awning model
max. 600 / 610 × 300 cm
max. 500 / 510 × 350 cm

Arm technology

Depends on the awning model

Options

Depends on the awning model,
the flex version can be rotated
by up to 335 degrees,
LED lighting,
shadeplus,
base cover



flex option

The markilux planet flex can be rotated and positioned wherever you need shading – by up to 335° with the Easy-Go lever.



An awning parasol with designer awning of your choice

Your markilux specialist dealers know exactly what they are doing. Allow yourself to be inspired by the range of accessories, your local markilux dealer will take care of everything else.

Everything revolves around your requirements.

markilux planet

The markilux planet is a parasol and awning in one. It's an eye-catcher that provides perfect shading for your room outdoors. This awning-cum-parasol protects you from solar radiation with exceptional reliability; it is extremely sturdy, yet flexible in its deployment. With the Easy-Go lever in the flex variant, you can simply rotate it by up to 335 degrees – so you can have shade wherever it is required. The slim post carries the selected markilux designer awning with ease and the combination of functionality and design is impressive. The markilux planet is further proof that everything revolves around your requirements at markilux.



markilux shadeplus

This versatile protection against low-lying sun, inquisitive glances and glare in the front profile allows you to enjoy the late afternoon sun without having to worry about prying eyes.



A side thought.



Wind Protection and Extra Privacy



Modular. Convertible. Wonderful.

Whether used as a free-standing room partition indoors or as a fixed feature outdoors, whether individually or grouped together – the markilux format is much more than just a blind.

It is an appeal to sociability - in textile form.



markilux format lift

Vertically extending aluminum frame with textile fabric covering or transparent full foil window



Framed in. No limits. Versatile.

The markilux clamp system keeps the cover under tension. Basic frame sections can be added in modularly fashion.



mx_format



Wind protection and extra privacy

individual unit: max. 300 × 250 cm,
extend it as you see fit,
slide, with sliding sections, max. 600 × 250 cm,
lift, extending window section, max. 250 × 190 cm

Options

triangular solutions
for markilux awning systems,
slide, lift,
panoramic window

Integrated into an awning system

Vertical protection, perfectly tailored to markilux awning systems, on request possible as slide or lift version with movable sections and panoramic window.

Life has a lot of nice sides to it.
And now your home does, too.

markilux format

Put up partitions to shield yourself from prying eyes - or create your own personal space in the open air with its own textile coziness. The markilux format puts a world of possibilities at your fingertips – and more than 200 cover patterns at your disposal.



The elegant way to show your neighbors where privacy begins.

markilux 790

There are few seating areas outdoors that are protected on all sides from sun, wind and prying eyes. Therefore, this slim markilux side screen simply makes your life on the balcony or patio more comfortable and enticing. It can be extended in one smooth movement and is always by your side when you need it and feel like making use of its benefits.

Side screen

Extension: max. 450 cm

Height: 90 – 250 cm

Options

Sloping top edge to the cover,
mobilifix (up to a height of 213 cm),
numerous fixture options



Sloping top edge

The cover is available with a sloping top edge which can be cut to match the pitch of your markilux awning. It creates a beautiful, enclosed and protected area free from prying eyes and the glare of the sun.



mx_790



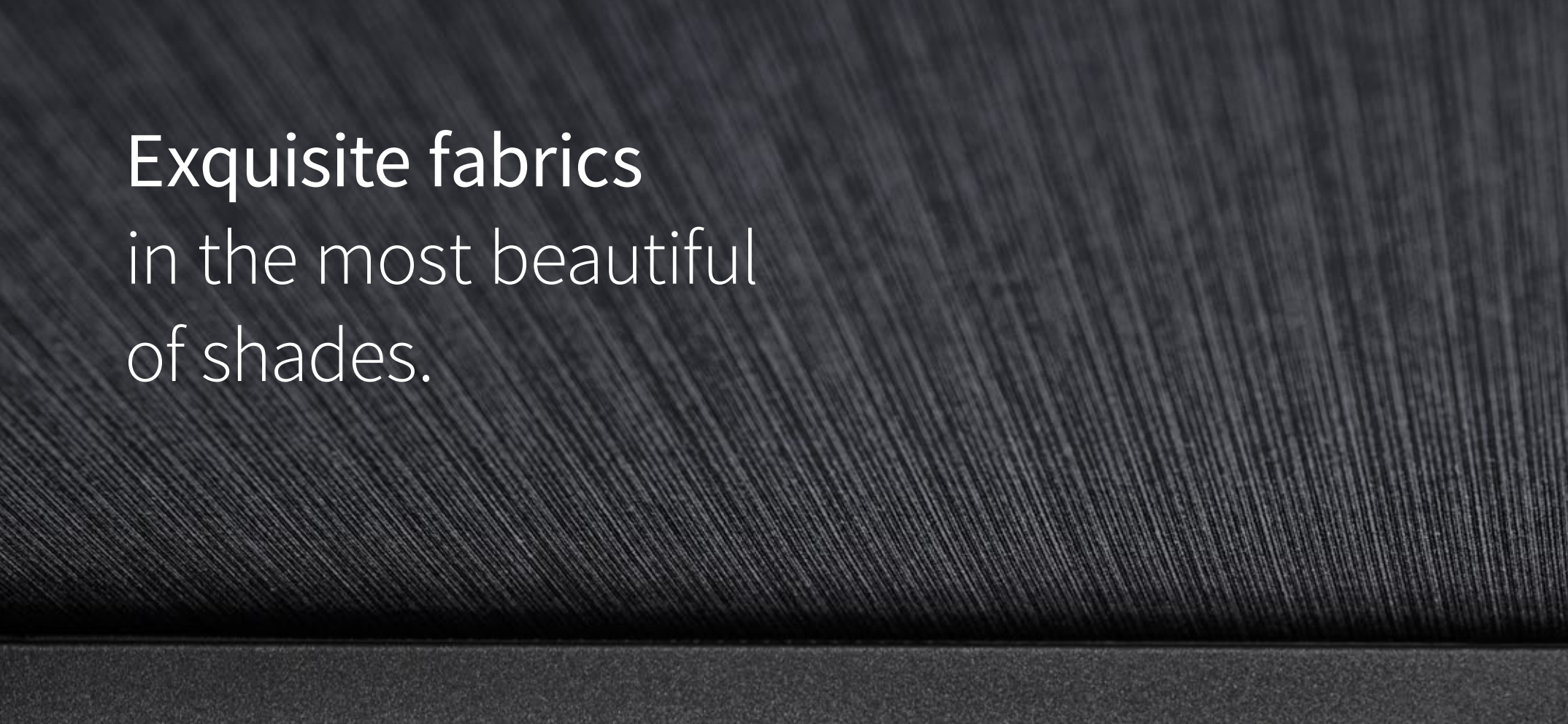
mobilfix

The moving support post with granite base plate stands secure, wherever you want it to.



A broad range of fixture options

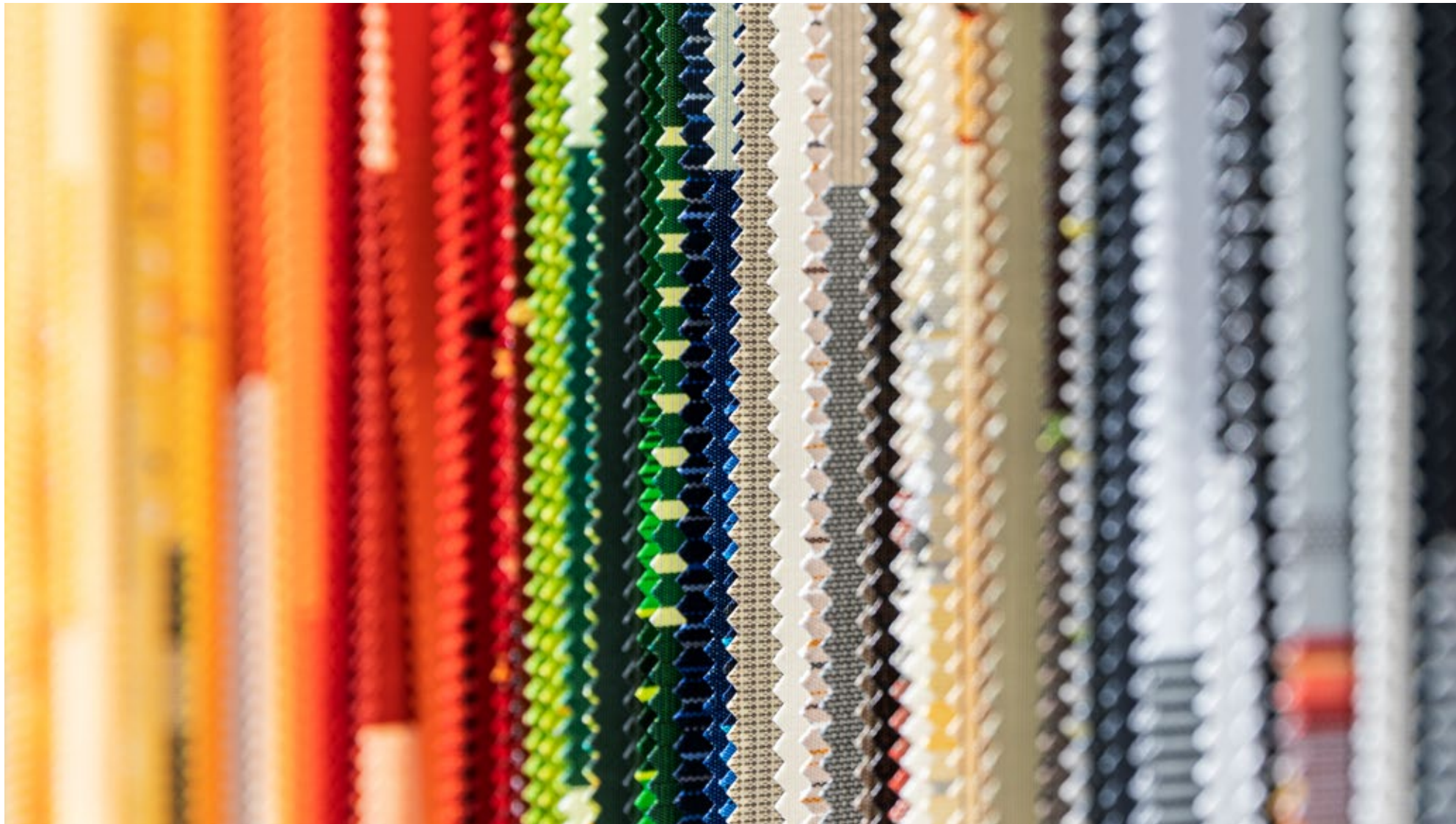
markilux offers you a suitable fixture option for virtually every installation situation.



Exquisite fabrics
in the most beautiful
of shades.

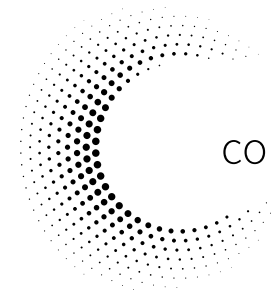


Awning Cover Fabrics



markilux collection one – One collection, endless ideas

Choose your own favorite pattern from a number of different color families. When making your selection allow yourself to be inspired, enthused and advised by a markilux specialist dealer near you ...



collection one

The most beautiful fabric between heaven and earth.

The markilux fabric collection

The color and quality of the awning fabric are what help make the ambience of your patio something special. Color nuances, patterns and textures succeed in creating that uniquely special effect by virtue of their brightness and hue. As a leading manufacturer of high-grade awning fabrics with 50 years of experience in the manufacture of textiles, markilux offers an unparalleled variety. The markilux textile design team is constantly developing new patterns in line with the latest trends, which are nevertheless characterized by their timeless appeal. Among the more than 200 patterns in thematically coordinated color families, you are bound to find your very own and most beautiful fabric between heaven and earth.



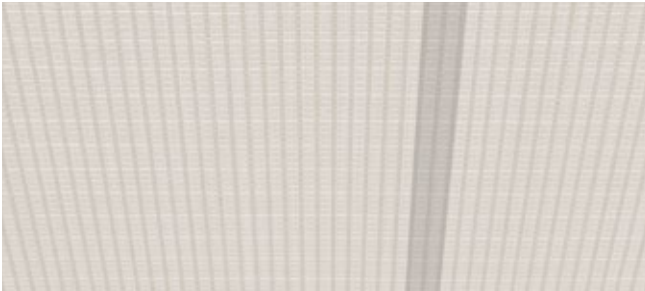

smartart

Art. Full.
Visual highlights for your patio.
Works of art, in fact.



Self-cleaning effect

Water droplets pick up dirt particles and run off the awning cover taking the dirt with them (the awning must be set at a pitch of at least 14 degrees), ensuring you can enjoy your beautiful fabric for a long time to come.



Bonded awning covers

Panel joints bonded together ultrasonically ensure a consistent, unobtrusive appearance. Their excellent resistance to water, light and fluctuations in temperature ensures that the service life of the cover is extended substantially.



Light and weather resistance and resistance to fading

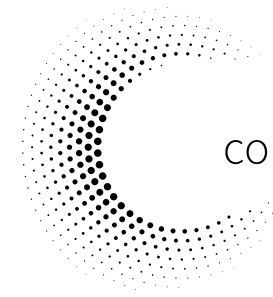
High-tech yarns dyed right to the core and the high-grade snc finish developed in house guarantee the most stunning shade in which to relax.



markilux AR App and awning cover finder

markilux develops, manufactures and tests its awning cover fabrics in its own facility in Germany. Find your own personal favorite amongst the more than 200 cover patterns in the showroom of your markilux specialist dealer, with the markilux AR App or with the [Awning Cover Finder on markilux.com](https://www.markilux.com)





collection one



markilux awning covers. Quality – Made in Germany.

Functionality can be so beautiful

markilux leaves nothing to chance when it comes to making awning covers. We add a final finishing flourish to the fabric qualities sunsilk and sunvas with a special formula developed in house. This gives these awning covers particularly high longevity and the necessary resistance to dirt and the weather.

markilux awning covers made of sunsilk, sunvas and acrylic usually offer the highest possible UV protection for textiles with UPF 50+. This means that your skin's own system of protection is enhanced by a factor of more than 50. This allows you to enjoy sunny days for longer, without putting your health at risk.

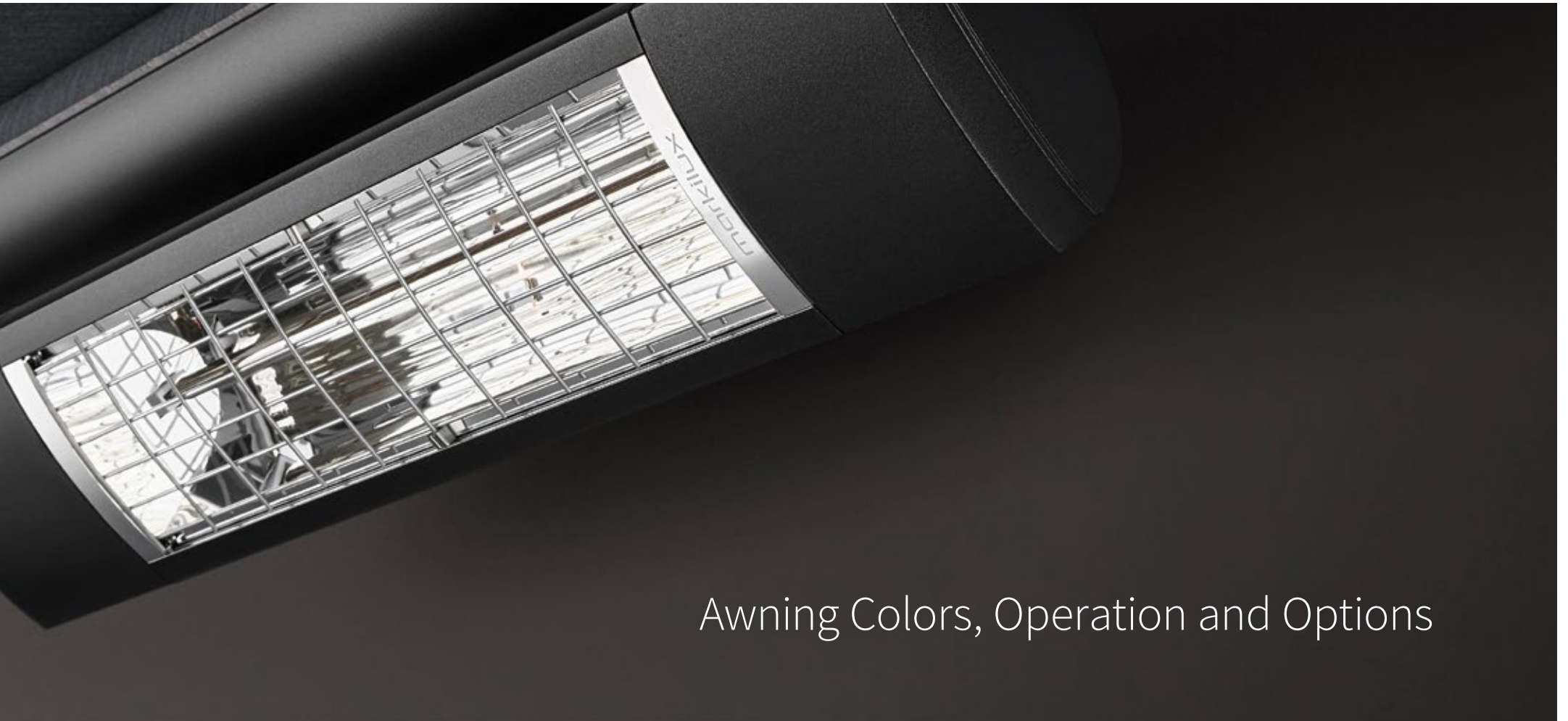
Certified in accordance with Oeko-Tex standard 100, all markilux awning covers are guaranteed free from harmful dyes and chemicals.



Detailed information about the typical properties of awning fabrics is available from your markilux specialist dealer and in the current markilux awning fabric brochure.



Beauty lies not in size,
but in attention to detail.



Awning Colors, Operation and Options



Traffic white

RAL 9016



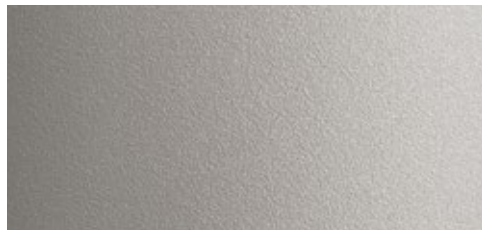
Off-white textured finish

5233



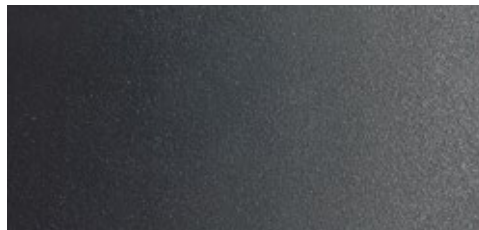
Metallic aluminum

RAL 9006



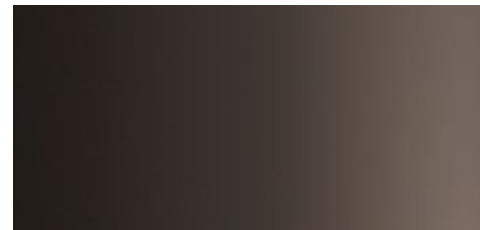
Stone grey metallic

5215



Anthracite metallic

5204



Grey brown

similar to RAL 8019



Havana brown textured finish

5229



RAL color of your choice

© RAL Bönn 2023





Sounds perfect.
Looks better.
Tone in tone.

markilux awning colors

The awning frame color complements and enhances the color of the fabric and creates a perfect link to the architectural surroundings. From a variety of shades of white through to the timelessly elegant anthracite, a broad range of colors is available to you. And if you want to create your own particular color scheme? No problem! We will gladly manufacture your dream awning in your own personal shade.

Our high-grade powder coating finish is guaranteed for any awning color you choose.

Matching every architectural style and customer demand

All markilux frame colors are available without surcharge.*

Non-standard colors can be selected on request.

* markilux 1300: only available without surcharge in traffic white RAL 9016 and metallic aluminum RAL 9006

Make it easy on yourself. And comfortable.

markilux ease of operation

Fulfills the highest expectation. The choice is yours: manual operation (optionally spring assisted), hard-wired motor or radio-controlled motor with remote control are all possible on most models. And if you wish, light, wind and rain sensors will control your markilux designer awning according to the prevailing weather conditions. Simply operate it at home yourself, or when you're out and about via your smartphone or tablet.

Your markilux specialist dealer will advise you on any questions you may have with regard to operating markilux awnings in comfort and will gladly explain to you why awning motors fitted with silentec technology are deafeningly quiet.

Availability depends on the model

Hard-wired motor / Radio-controlled motor



markilux remote control

Comfort can be so easy. Awning, shadeplus, light and warmth at the touch of a button.

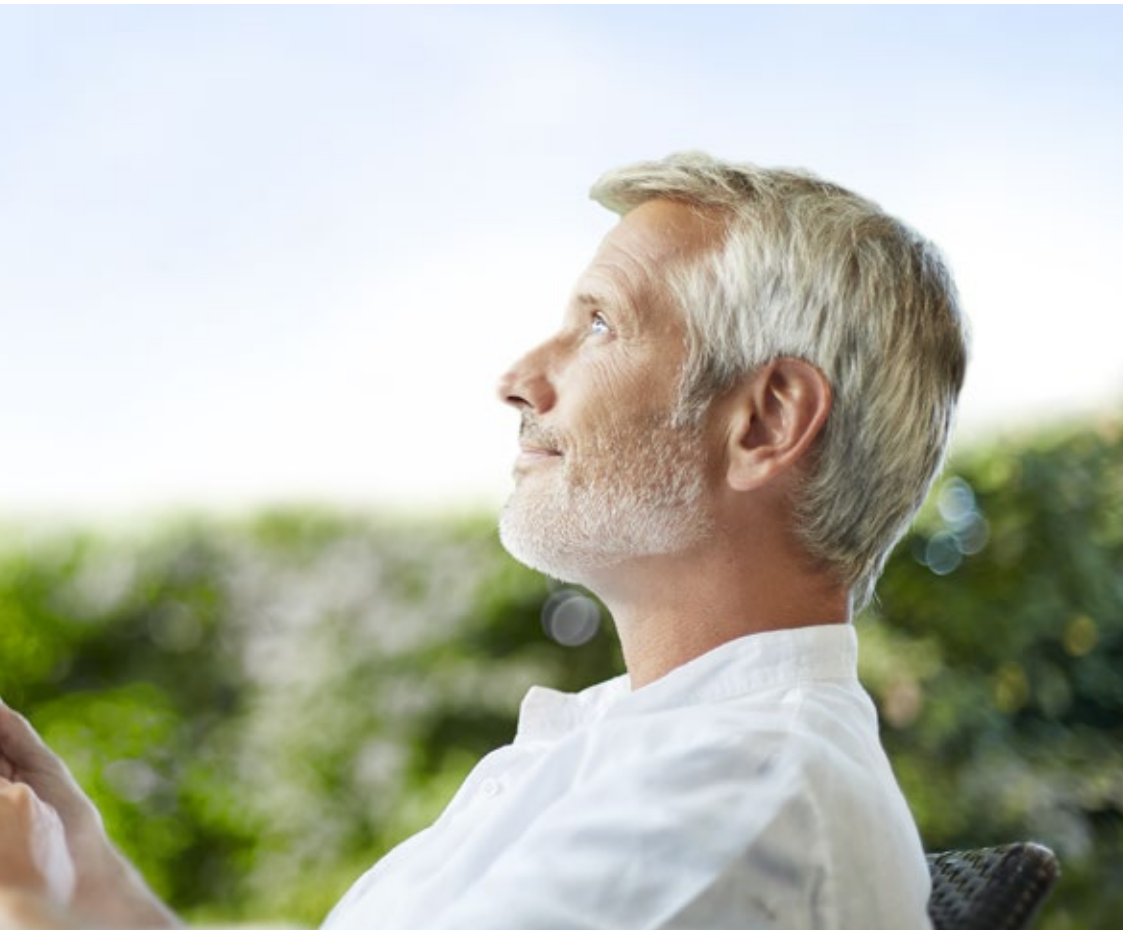


silentec motor

Deafeningly quiet. Considerably reduces the noise the motor makes when extending and retracting the awning.



App / Home automation



Smart control

Fashion your own personal patio atmosphere with awning, light, warmth and lots more besides in comfort using io technology with your smartphone or tablet – whether you are relaxing on your patio or away from home.

Automatic weather controls



Light sensor

Intelligent control of your blind or awning according to the intensity of the sun's rays. Battery operated, so there is no need for a mains power supply.



Rain sensor

The awning retracts automatically in the case of precipitation. This intelligent control mechanism protects the cover on your awning.



markilux vibrabox

Intelligent, sensitive and independent of the mains. Inertia sensor which reacts to the level of vibration caused by the wind and prompts a motor-driven awning to retract if the predetermined wind speed is exceeded.



Light and wind sensor

According to the prevailing weather conditions, this intelligent control system will extend and retract your awning automatically.



LED Line in the cassette

Appealing, ambient light in the form of an LED Line integrated into the cassette. Reserved and understated during the day. Dazzlingly beautiful and cozy in the evening.

LED Lines in the folding arms

A highlight accompanying many a pleasant moment. The dimmable LED Lines set the scene on your patio long after the sun has retired for the night.

LED Spots

Under the cassette or in the front profile: LED Spots that can be pivoted and dimmed create a lovely atmosphere on your patio in the evening.



Wall sealing profile

This slim aluminum profile closes the gap between the awning and the wall, allowing rain to be discreetly drained off via the awning.

Color combinations and polished chrome fittings

The cassette and styling profile are available in attractive colors and can be combined with one another.

stretch

The perfect solution for narrow patios, recesses or balconies. Thanks to the two crossover arms even awnings with a narrow width can extend further.

Coupled awnings

Depending on the model, up to three awnings can be joined together offering even more shade. A special roller blind elegantly closes the gap between the two awning covers.



markilux shadeplus

Simply block out the glare from a low-lying sun and the glances of inquisitive neighbors and capture the warmth of the day in the evening. This additional cover descends vertically downwards from the front profile to create a wonderfully private room outdoors. Depending on the model, it is also available with a hard-wired / radio-controlled motor.

Availability depends on the model

More freedom. More free space.

markilux options

Your markilux designer awning configured and tailored to your own personal and individual desires and preferences. Not a standard product, but perfect solar protection with a very personal touch. Unique and special.

Tension. Pure.

markilux arm technology

Highly durable, virtually noiseless and always perfectly geared to provide optimum cover tension.



Twin steel-link chains

On the market for decades and proven in all types of weather: the twin round steel-link chains lie protected in the folding arms.

Availability depends on the model



Bionic tendon

Inspired by nature, the bionic tendon, developed by markilux and made from high-tech textile fibers, delivers optimum power transference to the front profile and provides friction-free and virtually silent flexion of the arms. It impresses by virtue of its safeness and longevity.

A relaxed al fresco lifestyle. You too will be impressed.

markilux accessories

A lighting ambience full of atmosphere in the evening ist the perfect complement to your markilux solar protection solution. Detailed information and professional advice can be acquired from your local markilux specialist dealer or on markilux.com



markilux LED Spotline

The elegant light bar in a powder-coated aluminum housing, that can be fitted almost anywhere. The LED Spots can be swivelled and dimmed. Available in two sizes: 180 cm with 3 spotlights and 300 cm with 5 spotlights.



Perfect soffit installations

Many markilux designer awnings blend seamlessly into their architectural surroundings when fitted in a reveal or to the soffit.



All included. All round.

Additional vertical solar protection, heating and lighting options are of course also available to shade your balcony.



Variable pitch adjustment

markilux designer awnings bow to the sun: to achieve perfect solar protection on your balcony, depending on the model up to a pitch of 85°.

The best prospects. For all balcony fans.

markilux designer roller blinds for windows. And even without windows.

So that you can enjoy those precious moments on your balcony without restriction, you should be able to sit protected from strong sunlight, wind and unwanted glances. The high-quality “window roller blinds” from markilux are as attractive as they are robust – and also excellently suited for balconies. Right down the line. Award-winning. Good.



markilux drop-arm awnings

The freely elective angle of the drop arms, allows you to decide exactly how much sun is good for you and how much of a view you wish to retain.




markilux vertical cassette roller blinds

The cover is completely protected inside the cassette, when the awning is retracted. When vertically extended, it protects your favorite spot on the balcony perfectly.



markilux marquisolette

In the upper section, the sun and privacy protection runs vertically; in the lower section, the amount of light and the view can be determined by how far the arms are allowed to drop.



A clear overview.
Opening up
exciting prospects.



Technical Specification

markilux Cassette Awnings

markilux MX-1 compact

Page 14



markilux MX-2

Page 18



markilux MX-3

Page 22



markilux MX-4

Page 28



markilux 6000

Page 34



markilux 5010

Page 36



markilux 970

Page 38



Max. width × projection	700 × 415 cm	600 × 300 cm	600 × 300 cm	700 × 350 cm	700 × 400 cm	700 × 400 cm	600 × 300 cm
Optional		500 × 350 cm	500 × 350 cm	600 × 400 cm			500 × 350 cm
Cassette depth × height	376 × 214 mm	280 × 167 mm	230 × 120 mm	275 × 235 mm	255 × 165 mm	218 × 151 mm	266 × 140 mm
Operation	Radio-controlled motor*	Radio-controlled motor*	Manual operation	Radio-controlled motor*	Manual operation	Manual operation	Manual operation
Optional	+ silentec motor	+ Hard-wired motor	+ Servo-assisted manual operation + Hard-wired motor + Radio-controlled motor*	+ silentec Motor	+ Servo-assisted manual operation + Hard-wired motor + silentec motor + Radio-controlled motor*	+ Servo-assisted manual operation + Hard-wired motor + silentec motor + Radio-controlled motor*	+ Servo-assisted manual operation + Hard-wired motor + Radio-controlled motor*
Arm technology	Bionic tendon	Bionic tendon	Bionic tendon	Bionic tendon	Bionic tendon	Twin steel-link chains	Bionic tendon
Optional						+ Bionic tendon	
Fixture type	Face fixture	Face / top / eaves	Face / top / eaves	Face fixture	Face / top / eaves	Face / top / eaves	Face / top / eaves
Optional			+ Wall sealing profile		+ Wall sealing profile	+ Wall sealing profile	+ Niche / reveal
Options**	+ LED Line/Spots in the front profile + LED ambient lighting + LED Spots under the cassette + Color combinations + Selection MX + Shadeplus + Valance	+ LED Line in the cassette + LED Spots under the cassette + Color combinations	+ LED Line in the cassette + LED Spots under the cassette + Colored front panel and end cap inserts + Selection MX + Color combinations	+ LED Line in the cassette + LED Spots in the side caps + LED Spots in the front profile*** + External light sources + Colored lighting + Color combinations	+ LED Spots in the front profile + End cap insert in stainless steel + End cap trim in polished chrome + Shadeplus + Valance + Coupled awning	+ Front profile end caps in polished chrome + Shadeplus + Valance + Coupled awning	+ LED Line in the cassette + LED Spots under the cassette + Anodized front panel + Shadeplus + Color combinations

markilux 990

Page 40



500 × 300 cm

217 × 124 mm

Manual operation

- + Servo-assisted manual operation
- + Hard-wired motor
- + Radio-controlled motor*

Twin steel-link chains

- + Bionic tendon

Face / top / eaves

- + Wall sealing profile

- + End cap insert in polished chrome
- + Valance

markilux 3300

Page 42



700 × 400 cm

224 × 192 mm

Manual operation

- + Servo-assisted manual operation
- + Hard-wired motor
- + silentec motor
- + Radio-controlled motor*

Bionic tendon

Face / top / eaves

- + Wall sealing profile
- + Niche / reveal

- + Valance
- + Coupled awning

markilux 1600

Page 46



710 × 400 cm

254 × 223 mm

Manual operation

- + Servo-assisted manual operation
- + Hard-wired motor
- + Radio-controlled motor*

Twin steel-link chains

- + Bionic tendon

Face / top / eaves

- + Wall sealing profile

- + LED Line in folding arms
- + End caps in polished chrome
- + Shadeplus
- + Valance
- + Coupled awning
- + stretch

markilux 1710

Page 48



700 × 350 cm (mx 1710)
700 × 400 cm (mx 1700)

236 × 217 mm

Manual operation

- + Servo-assisted manual operation
- + Hard-wired motor
- + Radio-controlled motor*

Bionic tendon

Face / top / eaves

- + Wall sealing profile

- + LED Line in folding arms
- + End caps and end cap insert in polished chrome
- + Coupled awning
- + stretch

markilux 930

Page 50



500 × 300 cm

286 × 122 mm

Manual operation

- + Servo-assisted manual operation
- + Hard-wired motor
- + Radio-controlled motor*

Twin steel-link chains

Face / top

- + LED Line in folding arms
- + Shadeplus
- + Pitch adjustment gear
- + Coupled awning

markilux 1300

Page 52



700 × 400 cm

212 × 232 mm

Manual operation

- + Servo-assisted manual operation
- + Hard-wired motor
- + Radio-controlled motor*

Twin steel-link chains

Face / top / eaves

- + Aluminum coverboard

- + LED Line in folding arms
- + Shadeplus
- + Pitch adjustment gear
- + Coupled awning

markilux Pergola Awnings

pergola classic

Page 56



pergola cubic

Page 58



pergola compact

Page 60



pergola stretch

Page 64



Max. width × extension	600 × 450 cm	600 × 450 cm	450 × 400 cm	700 × 700 cm
Optional	500 × 600 cm	500 × 600 cm		
Type of awning	Pergola awning	Pergola awning	Pergola awning	Pergola awning
	tracfix cover guidance via lateral guide tracks supported by slim posts	tracfix cover guidance via lateral guide tracks supported by slim posts	tracfix cover guidance via lateral guide tracks supported by slim posts	Cover folds away via track-guided supporting profiles
Operation	Hard-wired motor	Hard-wired motor	Hard-wired motor	Radio-controlled motor*
Optional	+ silentec motor + Radio-controlled motor*	+ silentec motor + Radio-controlled motor*	+ Radio-controlled motor*	
Fixture type	Face / top / eaves	Face / top / eaves	Face / top / eaves	Face / top / eaves
	+ Wall sealing profile	+ Wall sealing profile	+ Wall sealing profile	Includes wall sealing profile and system coverboard
Options**	+ LED Line / LED Spots + Shadeplus + Wind / privacy protection + Posts round / square + Telescopic posts + Ballast boxes + Coupled awning	+ LED Line / LED Spots + Shadeplus + Wind / privacy protection + Posts round / square + Telescopic posts + Ballast boxes + Coupled awning	+ LED Line / LED Spots + Shadeplus (manual) + Wind / privacy protection + Posts round / square + Telescopic posts + Ballast boxes	+ LED Line / LED Spots + Vertical roller blinds + Wind / privacy protection + Cross-beam with LED lighting + Coupled awning + Panorama window

markilux Awning Systems

markilux markant

Page 68



markilux syncra

Page 70



600 × 600 cm (2 fields) 300 × 600 cm (1 field)	Up to 60 m² depending on the awning model
Textile weather protection on support posts with integrated designer awning	Awning frame system with two posts and one or two folding-arm or pergola designer awnings of your choice
Radio-controlled motor*	Depends on the awning model
Free standing on concrete foundations or attached to a wall	Free standing on concrete foundations or ballast boxes
+ LED Line / LED Spots + Wall sealing profile + Vertical roller blinds + Wind / Privacy protection + Panorama window	Depends on the awning model + uno + flex + Posts round / square + LED Line / LED Spots + Base cover + Coupled system

markilux planet

Page 72



600 / 610 × 300 cm

500 / 510 × 350 cm

Awning-cum-parasol

with folding-arm designer awning of your choice

Depends on the awning model

Free standing

on concrete foundations

Depends on the awning model

- + flex (335° pivoting)
- + LED Line / LED Spots
- + Shadeplus
- + Base cover

markilux format

Page 76



300 × 250 cm

modularly extendable

Wind / privacy protection

Basic modular sections which can be extended at will and can be slid sideways on request

Manual operation

Fixed / free standing

or as part of an awning system

- + Triangular solutions
- + slide
- + lift
- + Panorama window

markilux 790

Page 78



Extension: max. 450 cm

Height: 90 – 250 cm

Side screen

Lateral protection from low-lying sun, wind and unwelcome glances

Manual operation

Face / reveal

- + Sloping top edge
- + mobilfix
- + A broad range of fixture options

Awning Configurator



Create the most alluring shade in the world

Configure your markilux designer awning including cover and optional accessories on markilux.com or visualize your dream awning live on the wall of your own home using the free markilux AR App.

Your markilux specialist dealer will advise you personally on site, will draw up an offer tailored to your requirements and install the product professionally.



The awning configurator on markilux.com



markilux 3D App Free in your App Store



The best under the sun. Create the most alluring shade in the world.

Innovative technology and the pinnacle of quality, have received both acclaim and multiple awards. Made in Germany. Ideas, detailed information, professional advice and all the exquisite markilux awning fabric patterns can be found in your specialist dealer's showroom and on [markilux.com](https://www.markilux.com)



[markilux.com](https://www.markilux.com)

markilux[®]
The best under the sun