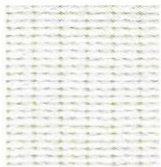




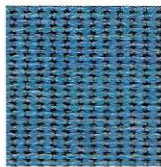
Properties	Mass	Thickness	Fabric Width	Strip Tensile		Elongation at Break		Tearing Strength		Burst Strength	Burst Strength	Temp. Stability
				Warp	Weft	Warp	Weft	Warp	Weft	ASTM 3787 Ball	ASTM 3786 Mullen	
Test Method	ASTM 3776	ASTM 1777	ASTM 3774	ASTM D 5034		ASTM D 4595-87		ASTM D 2261		ASTM 3787 Ball	ASTM 3786 Mullen	
US	9.6 oz/yd	50.4 mil	118 in.	278 lbf	340 lbf	71%	74%	33 lbs	36-lbs	363 lb	460 psi	-13°F/+176°F
Metric	325 gsm	1.28 mm	3 m	1236 N	1512 N	71%	74%	147 N	160 N	1615 N	3172 kPa	-25°C/+80°C



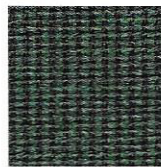
Cream



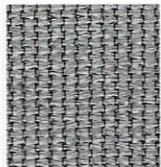
Beige



True Blue



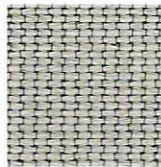
Forest Green



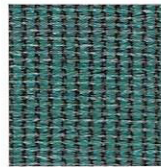
Silver



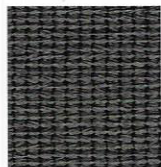
Sunblaze



Latte



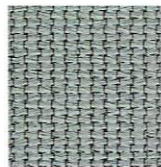
Bottle Green



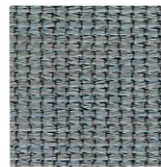
Charcoal



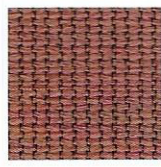
Midnight



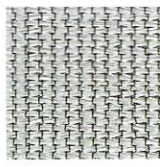
Mint Green



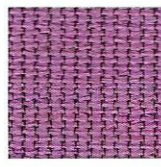
Dove Blue



Oxide Red



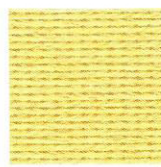
Pearl Onyx



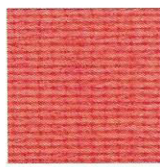
Purple



Olive



Yellow



Red



Brown



Navy Blue

Colors	UPF	UVR	Shade Factor	Fire Retardancy	Fire Resistance
Cream	13	92%	74%	Yes	ASTM E-84
Beige	33	97%	87%	Yes	ASTM E-84
True Blue	14	93%	89%	Yes	CA 1237:1 Title 19 - CSFM NFPA-701 #2
Forest Green	24	96%	94%	Yes	CA 1237:1 Title 19 - CSFM NFPA-701 #2
Silver	19	95%	93%	Yes	CA 1237:1 Title 19 - CSFM NFPA-701 #2
Sunblaze	14	94%	91%	Yes	CA 1237:1 Title 19 - CSFM NFPA-701 #2
Latte	18	95%	90%	Yes	CA 1237:1 Title 19 - CSFM NFPA-701 #2
Bottle Green	16	94%	91%	Yes	CA 1237:1 Title 19 - CSFM NFPA-701 #2
Charcoal	20	96%	94%	Yes	CA 1237:1 Title 19 - CSFM NFPA-701 #2
Midnight	33	98%	98%	Yes	CA 1237:1 Title 19 - CSFM NFPA-701 #2
Mint Green	18	95%	93%	Yes	CA 1237:1 Title 19 - CSFM NFPA-701 #2
Dove Blue	13	93%	90%	Yes	CA 1237:1 Title 19 - CSFM NFPA-701 #2
Oxide Red	14	93%	91%	Yes	CA 1237:1 Title 19 - CSFM NFPA-701 #2
Pearl Onyx	16	94%	86%	Yes	CA 1237:1 Title 19 - CSFM NFPA-701 #2
Purple	16	94%	86%	Yes	CA 1237:1 Title 19 - CSFM NFPA-701 #2
Olive	26	97%	96%	Yes	CA 1237:1 Title 19 - CSFM NFPA-701 #2
Yellow	16	94%	76%	Yes	ASTM E-84
Red	29	97%	86%	Yes	ASTM E-84
Brown	19	95%	93%	Yes	CA 1237:1 Title 19 - CSFM NFPA-701 #2
Navy Blue	23	96%	96%	Yes	CA 1237:1 Title 19 - CSFM NFPA-701 #2